

LINE IDENTIFICATION FOR NTT EMMI ECHELLE SPECTRA
THORIUM-ARGON :: GRATING ECHELLE 9 & GRISM 4
(OCTOBER 2004)

1 Introduction

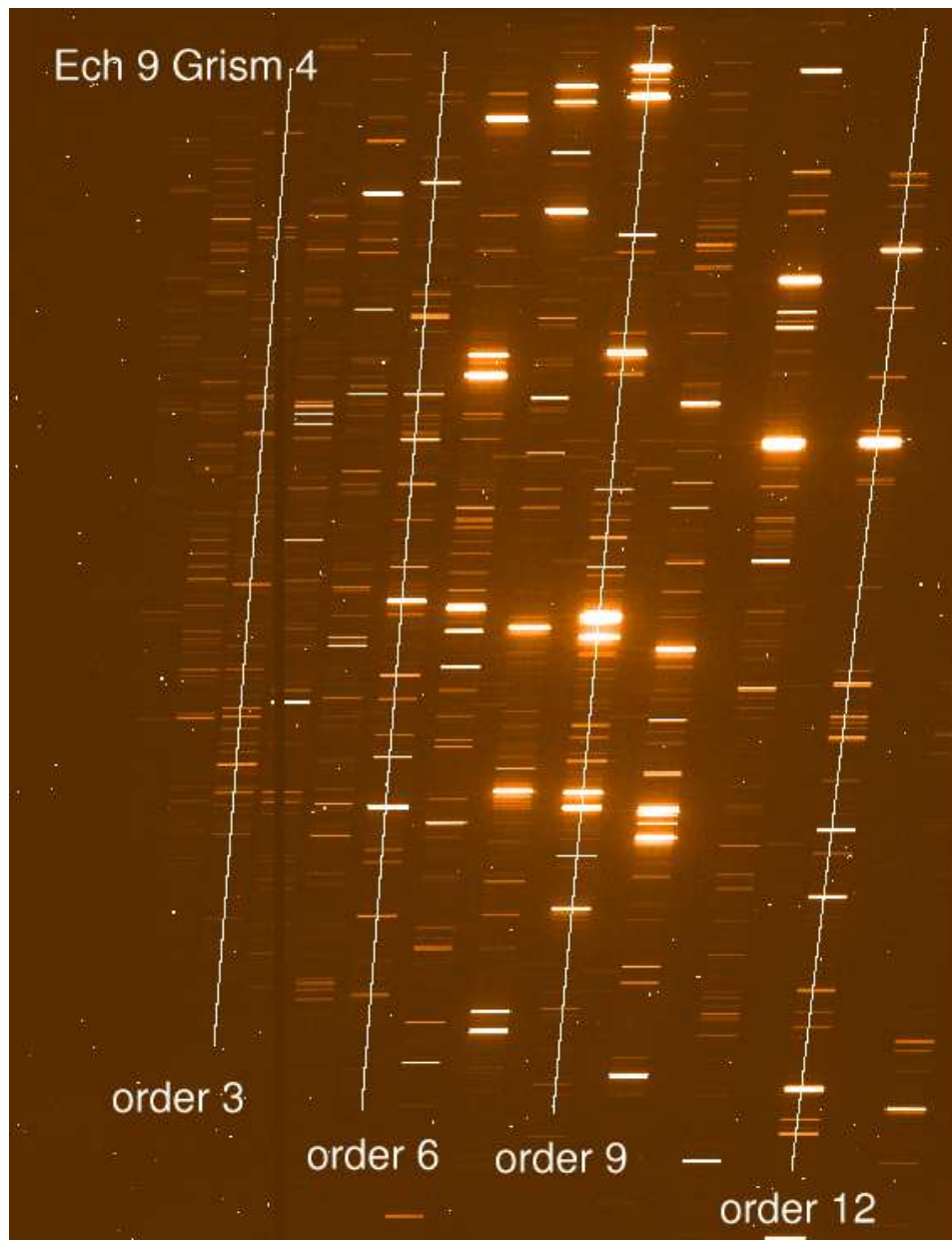
This document contains the atlas for line identification of NTT EMMI Echelle spectra taken with the Grating Echelle #9 with Grism #4 as cross-disperser. [This is the final version obtained through a median of 3 frames.]

2 Hints & Tips for the reduction

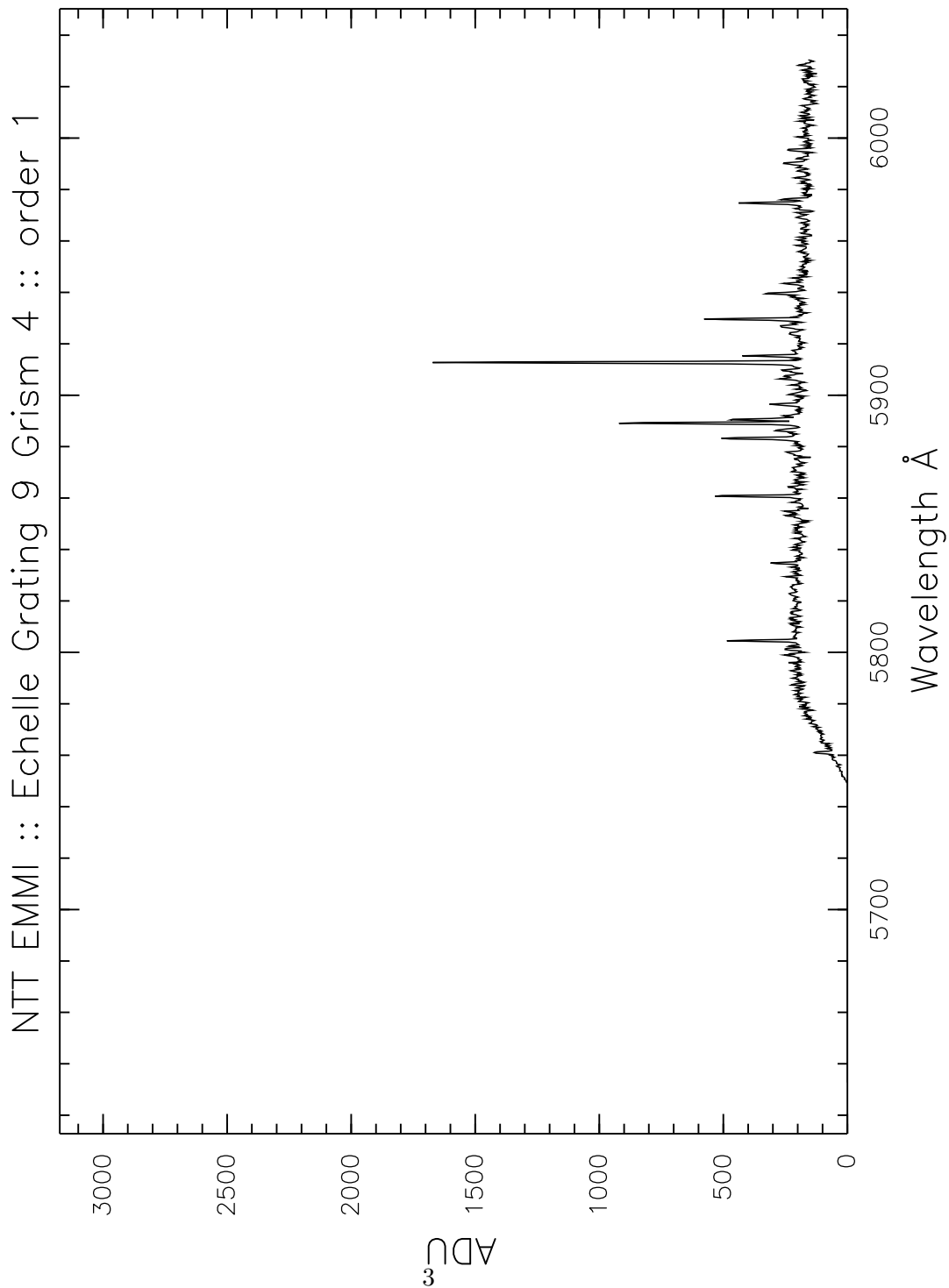
Since the EMMI Red CCD has a gap, one should take care of the tracing process during the reduction. However, since there is few orders in the mode Echelle 9 Grism 4, the trace is not too difficult.

3 Image of the calibration spectrum

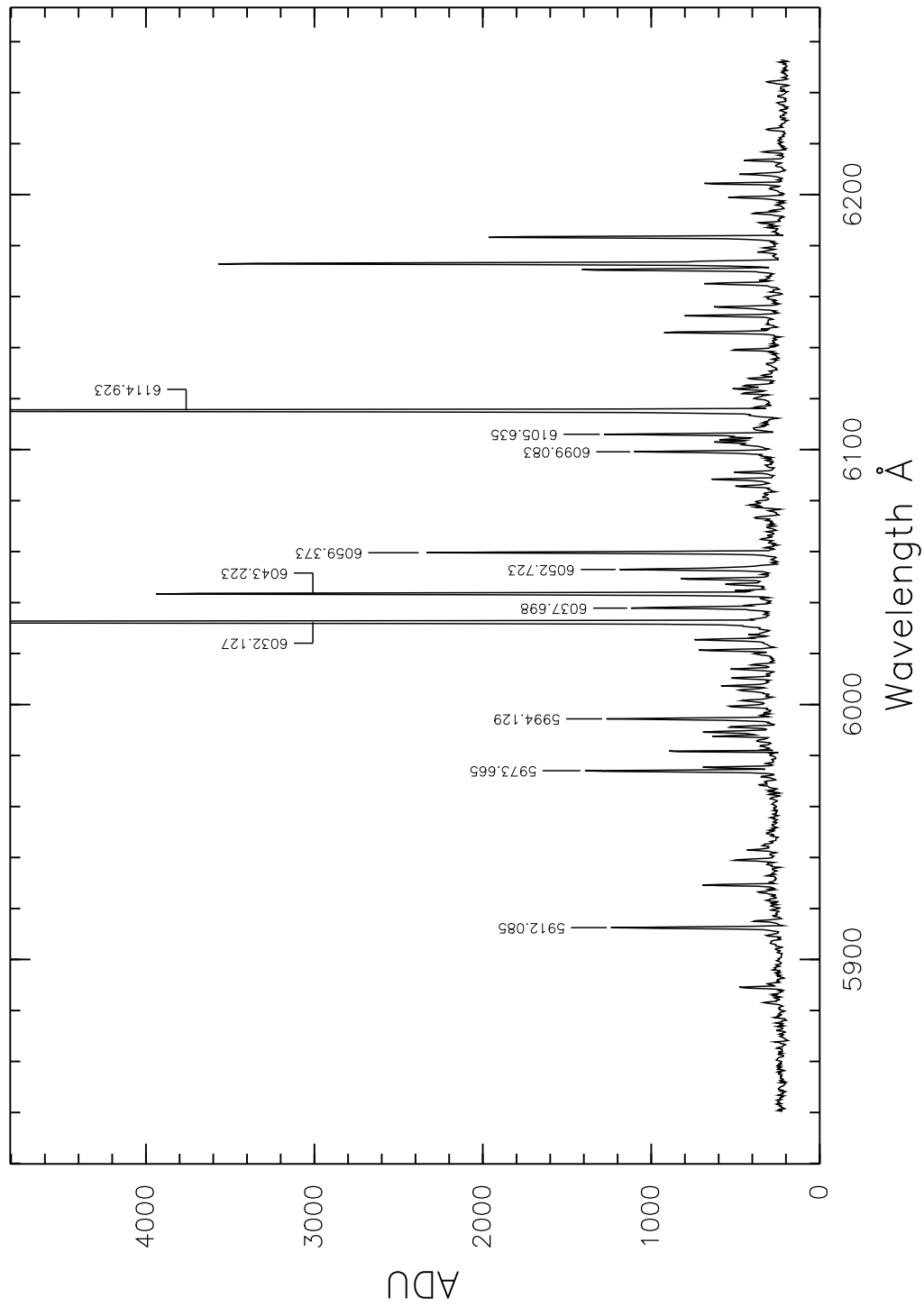
Below is the image of the Thorium-Argon frame. The CCD gap is indicated as well as the identification of the orders.



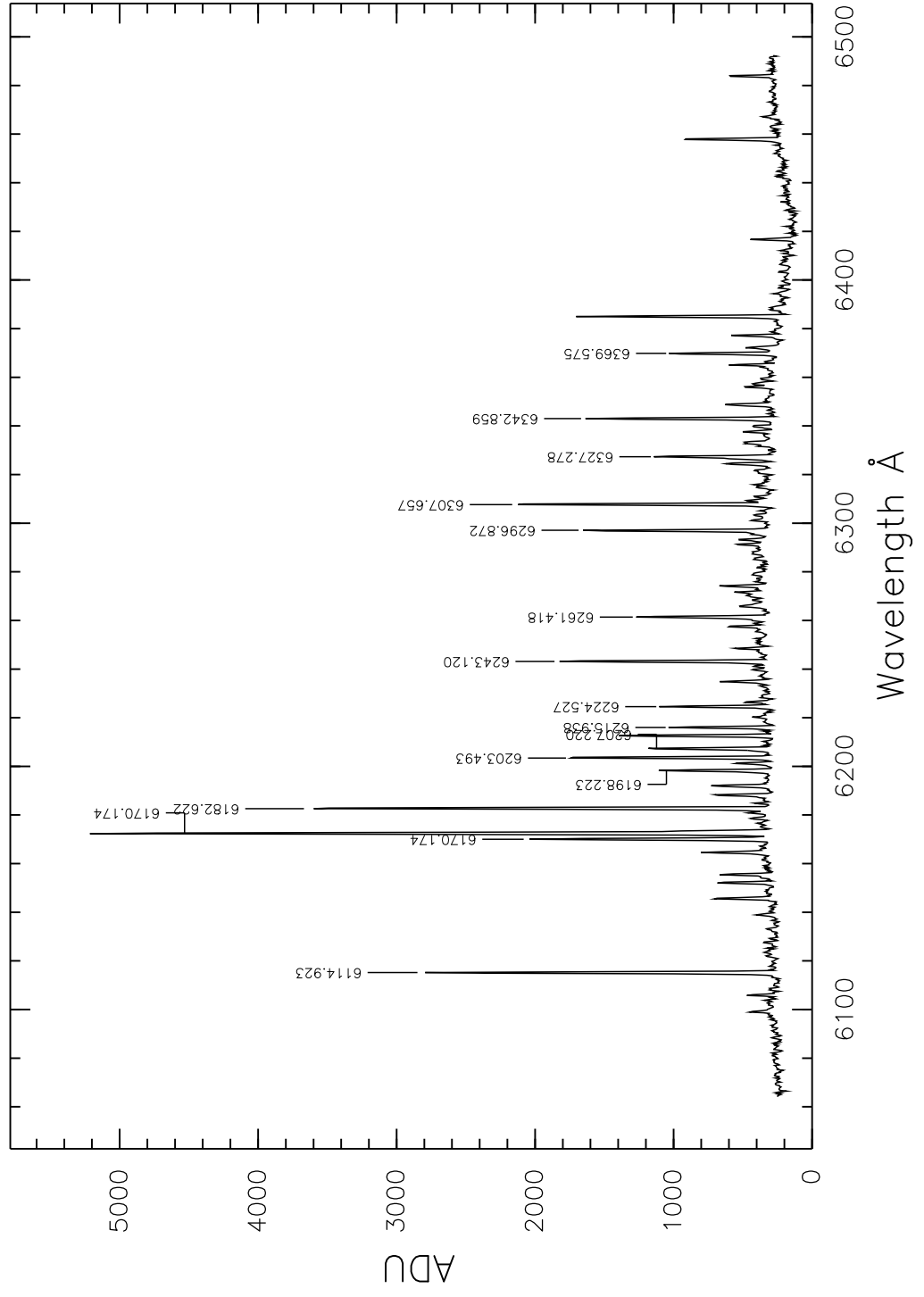
4 Atlas of line identification



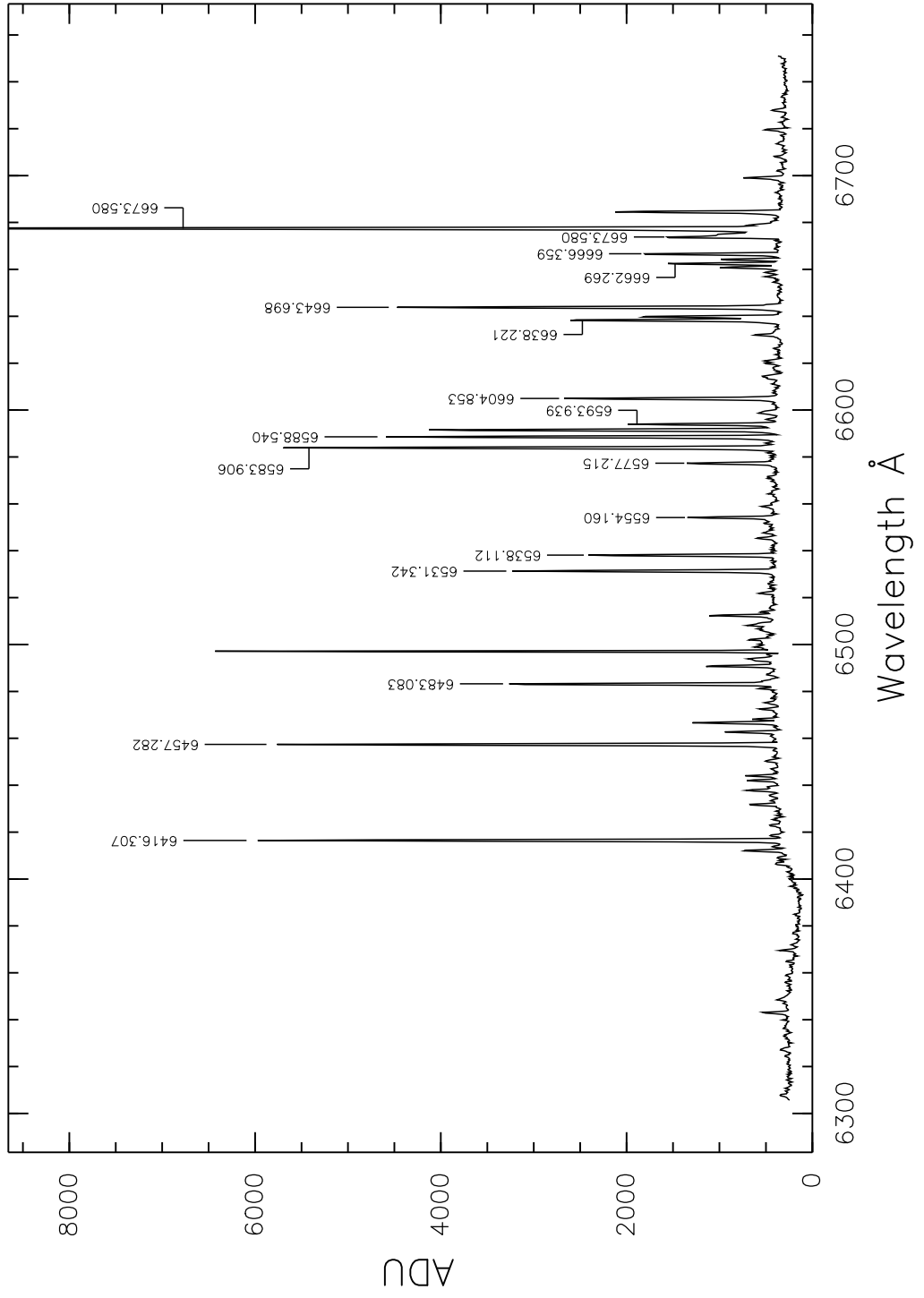
NTT EMMI :: Echelle Grating 9 Grism 4 :: order 2



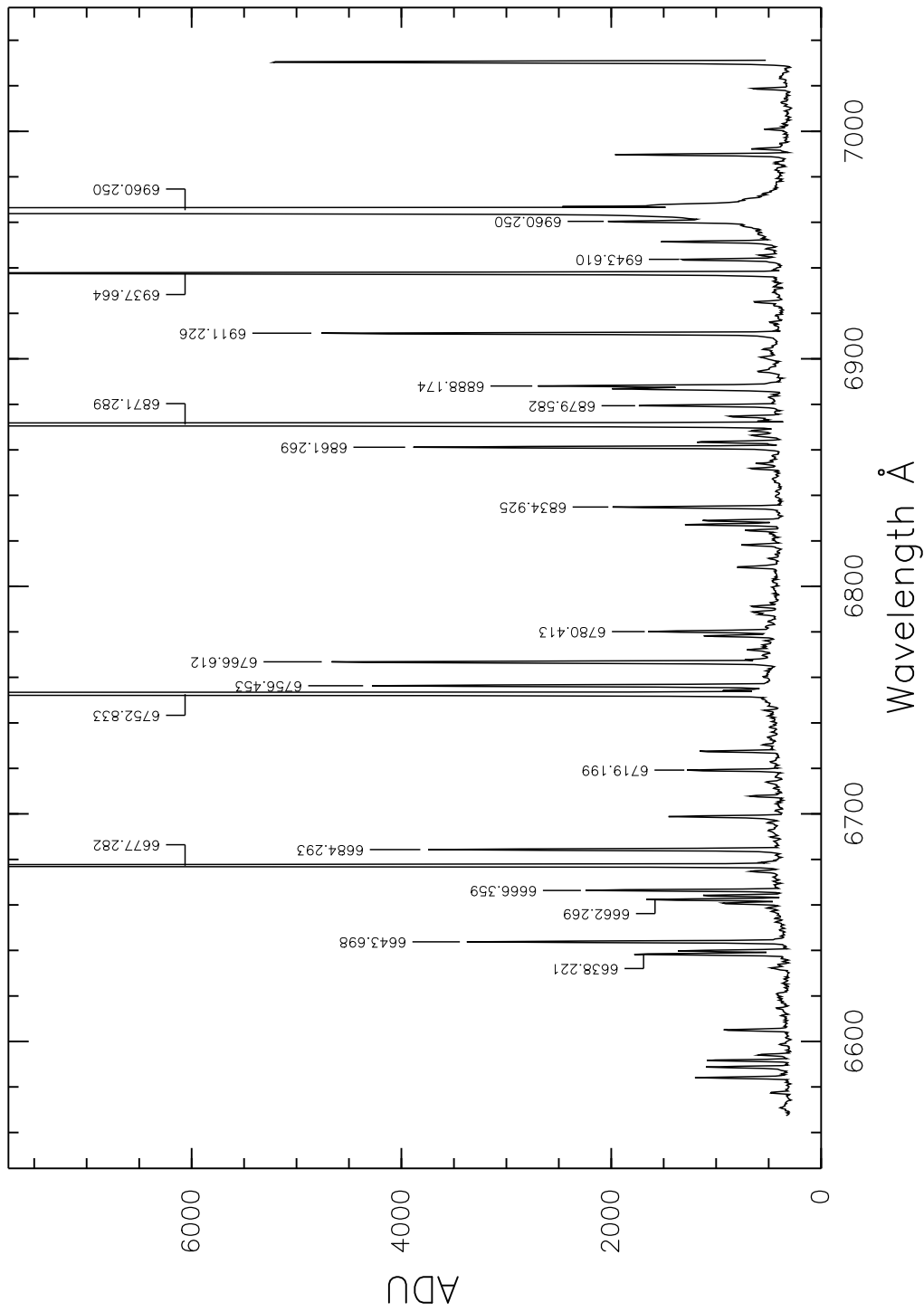
NTT EMMI :: Echelle Grating 9 Grism 4 :: order 3



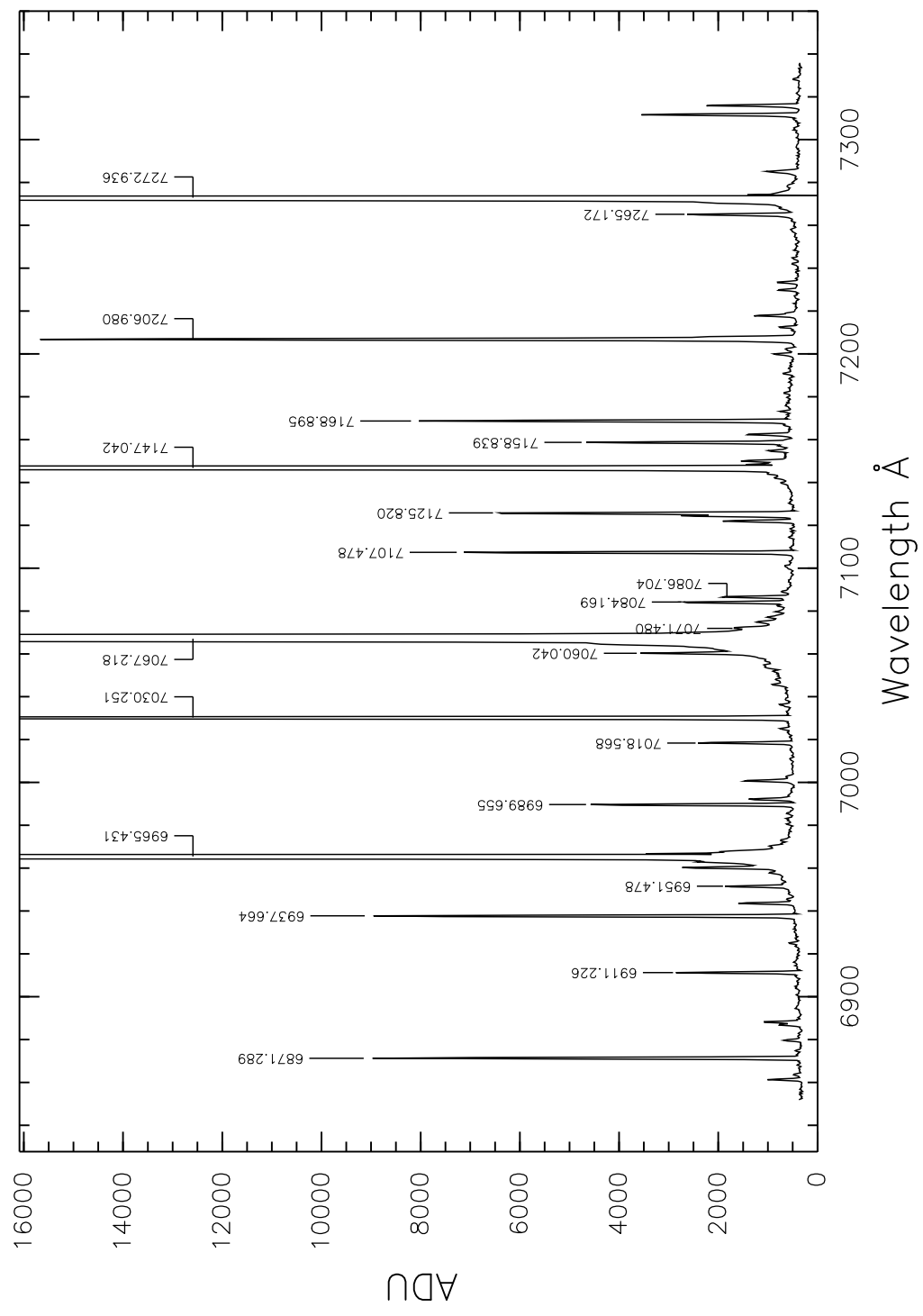
NTT EMMI :: Echelle Grating 9 Grism 4 :: order 4



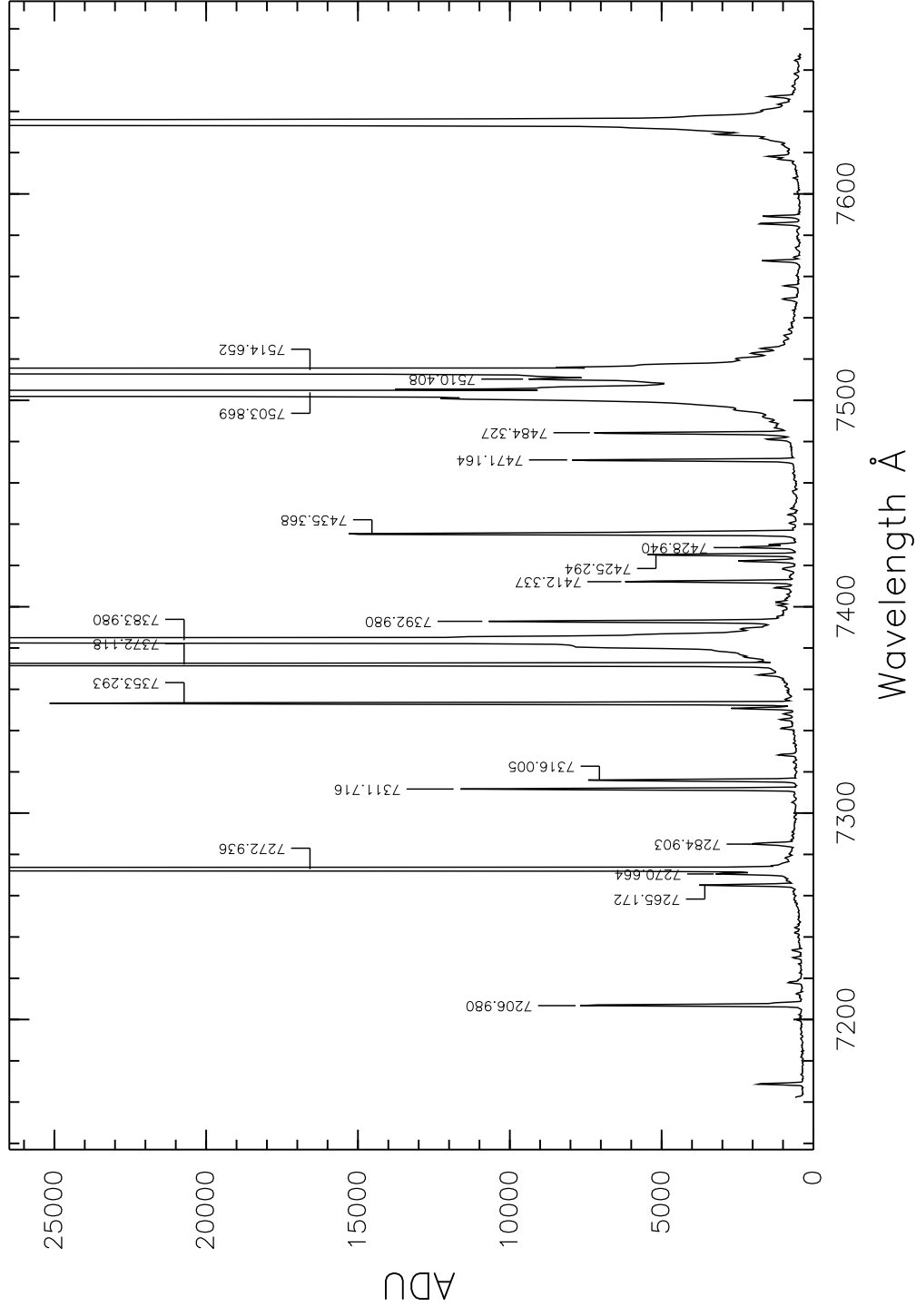
NTT EMMI :: Echelle Grating 9 Grism 4 :: order 5



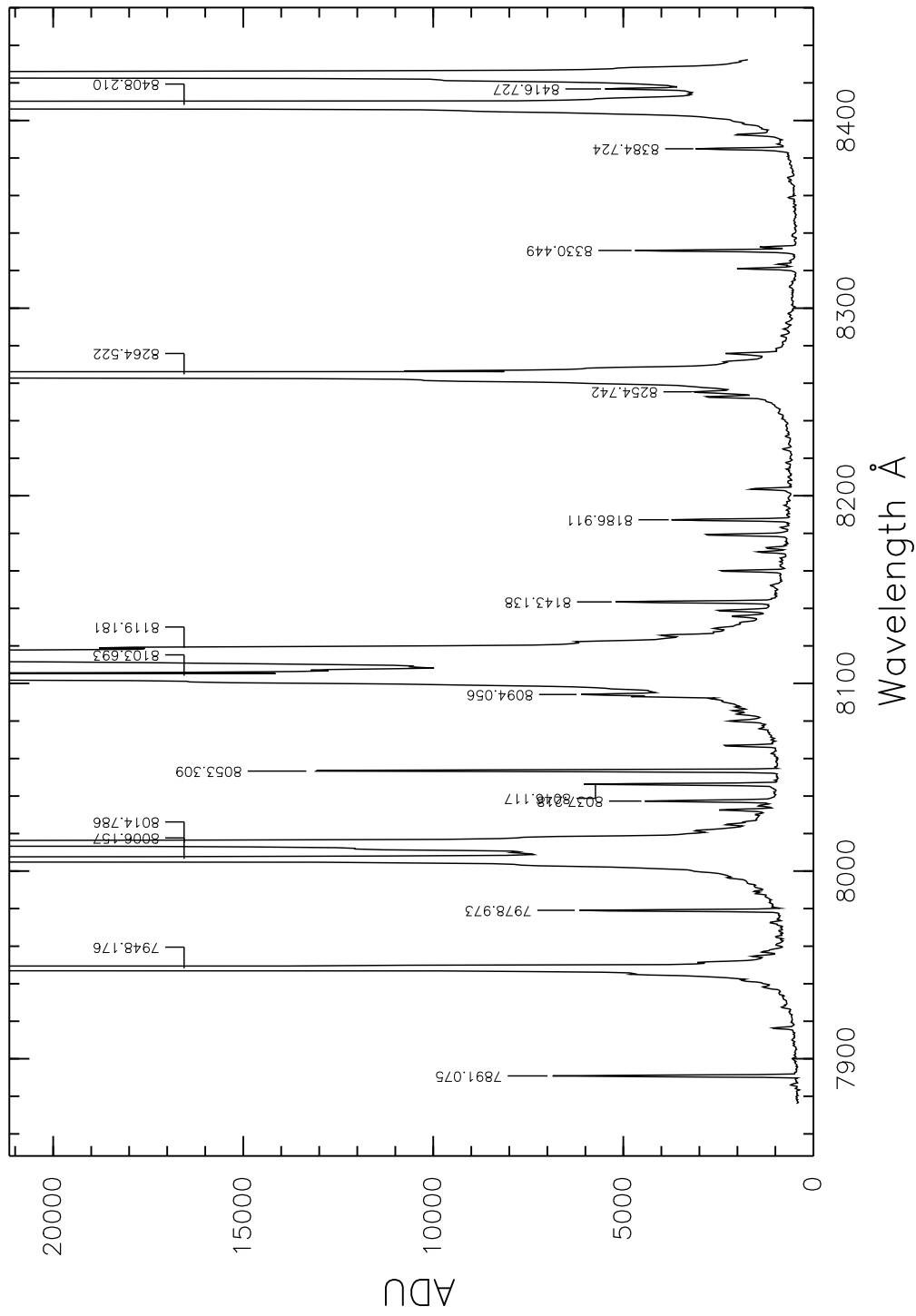
NTT EMMI :: Echelle Grating 9 Grism 4 :: order 6



NTT EMMI :: Echelle Grating 9 Grism 4 :: order 7



NTT EMMI :: Echelle Grating 9 Grism 4 :: order 9



NTT EMMI :: Echelle Grating 9 Grism 4 :: order 10

